

**NATIONAL ROAD NETWORK  
PAVEMENT IMPROVEMENT &  
MINOR WORKS PROGRAMME**



***Presentation to Council December 2017***

# **NATIONAL ROAD NETWORK PAVEMENT IMPROVEMENT & MINOR WORKS PROGRAMME**

- Transport Infrastructure Ireland Funded
- Two Elements:-
  - Pavement Improvement – On-line Road Strengthening
  - Minor Works – Combination of On-line Strengthening and Realignment (20 to 25 Yr Design Life)
- Excludes Expenditure under
  - Major Works
  - Ordinary Maintenance
  - B.1.2 Maintenance
  - H28 Skid Resistance Programme
  - HD 15 / HD 17 Low Cost Safety Improvement
  - Bridge Rehabilitation

## **County Kilkenny – National Road Network**

- Kilkenny is well serviced by its National Road Network M8, M9, N9, N10, N24, N25, N29, N76, N77 & N78
- Approximately 200km's in length
- Broken-down as follows:-
  - Motorway 68km's, National Primary 63 Km's & National Secondary 67 km's
- The National Road Network represents less than 6.5% of the total road network in Kilkenny
- National statistics show the National Road Network carries approximately 45% of the country's total road traffic and most of Ireland's freight is distributed by road.

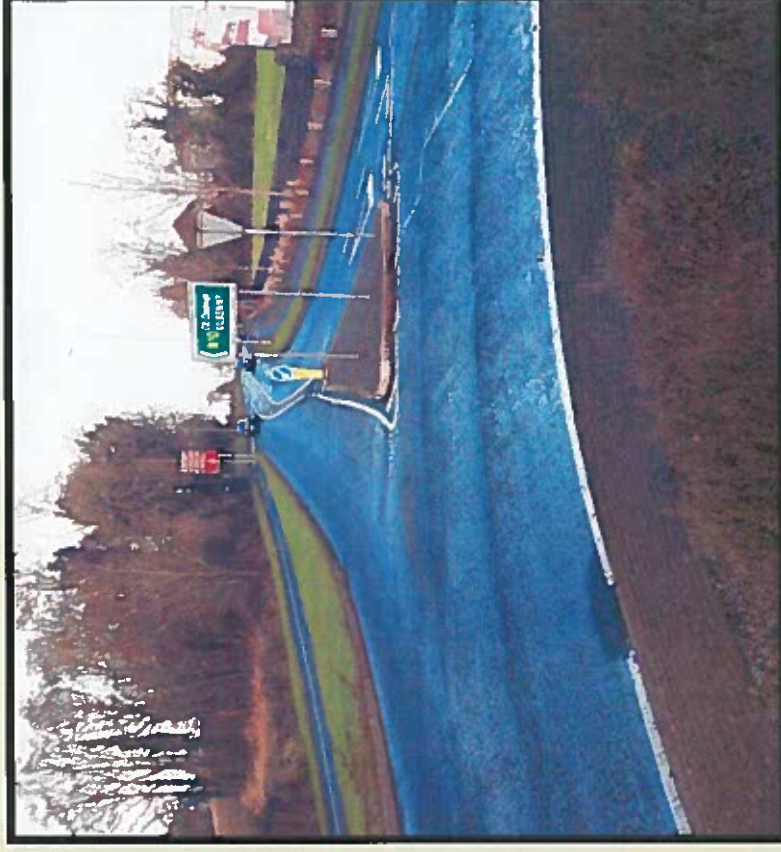
# N10 National Primary – M9 Junction 8 Kilkenny to Junction 9 Danesfort

- Since 2007 the full 17km's or 100% of the N10 was either reconstructed or new construction, of this 9.4 km's or 55% was improved under the Pavement Improvement & Minor Works Programme, with the balance consisting of new construction i.e. N10 Link Road and Ring Road Extension
  - Five Separate PMI Schemes:
  - 2012 Ossory Bridge to Springhill Roundabout
  - 2011 Springhill Roundabout to Danesfort
  - 2010 Danesfort to M9 Interchange
  - 2009 Old Dublin Road Roundabout to Ossory Bridge
  - 2007 Bohernatounish Ring Road Roundabout
- Total PMI Expenditure in excess of €5 million

# N10 National Primary - Kilkenny Environs



2009 Dublin Rd Rdt to Ossory Bridge



2012 Springhill Rdt to Ossory Bridge

## **N24 National Primary – Granny to Tipperary Co. Bounds**

- The N24 is 19.3 km in length, of this the Piltown Fiddown By-pass accounts for 9.3km's. Since 2007 the remaining 10 km's or 100% of the N24 from the M9 Quarry Roundabout to the Piltown By-pass was improved under the Pavement Improvement & Minor Works Programme over the last ten years.

- **6 No. PMI Schemes included:**

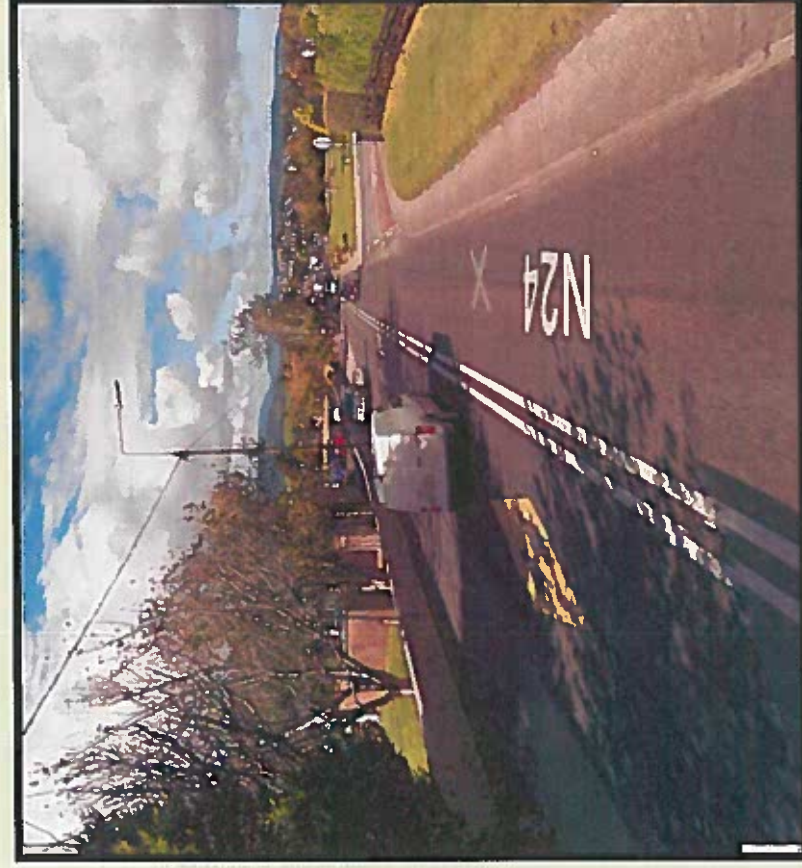
- 2017 Granny & New Aglish      2015 Mooncoin Village
- 2014 Aglish to Ballygriffin      2011 Curraghmartin to Ballygriffin
- 2010 Mooncoin to Aglish      2007 Clonmore to Mooncoin

Total Expenditure of approximately €5 million

### **Planned** (Subject to Planning and TII Approvals)

- **Tower Road Overbridge and Ink Bottle Link Road**  
Programme
  - Appoint Consultants Jan 2018 , Planning & Design Jan 2018 to Jan 2019
  - Tender Process Jan 2019 to Mid 2019, Construction Mid 2019 to Mid 2020
- **Carrick Road Improvement Scheme**  
Programme
  - Scheme Feasibility & Options Report + Project Appraisal Report Qtr 2 2018
  - Planning under Part 8 Qtr 3 to Qtr 4 2018

# N24 Mooncoin - Scoil Mhuire Lourdes B.N.S.

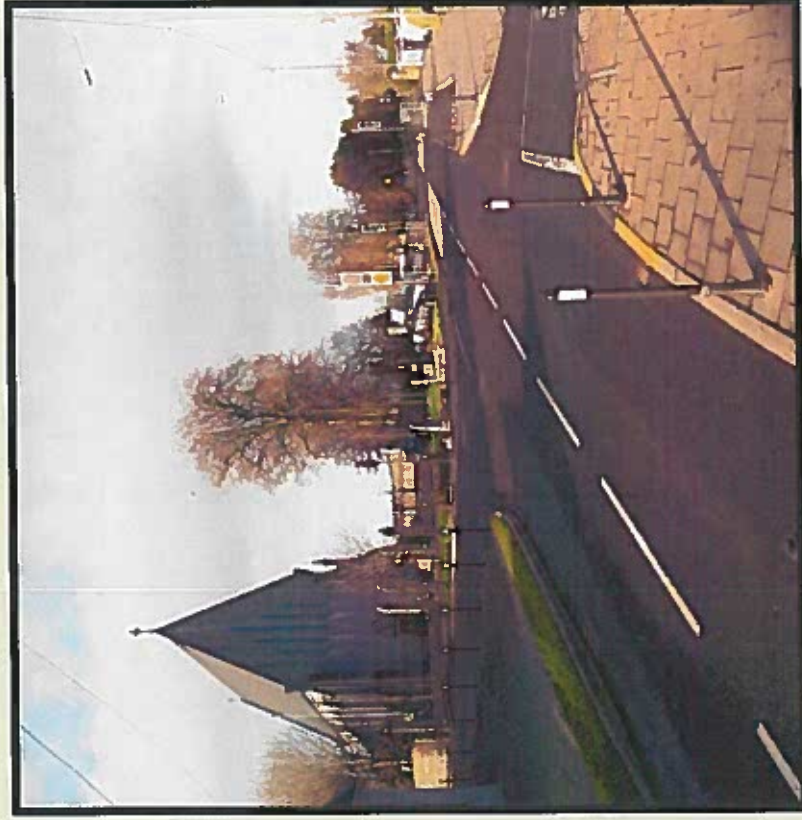


**BEFORE - 2015**

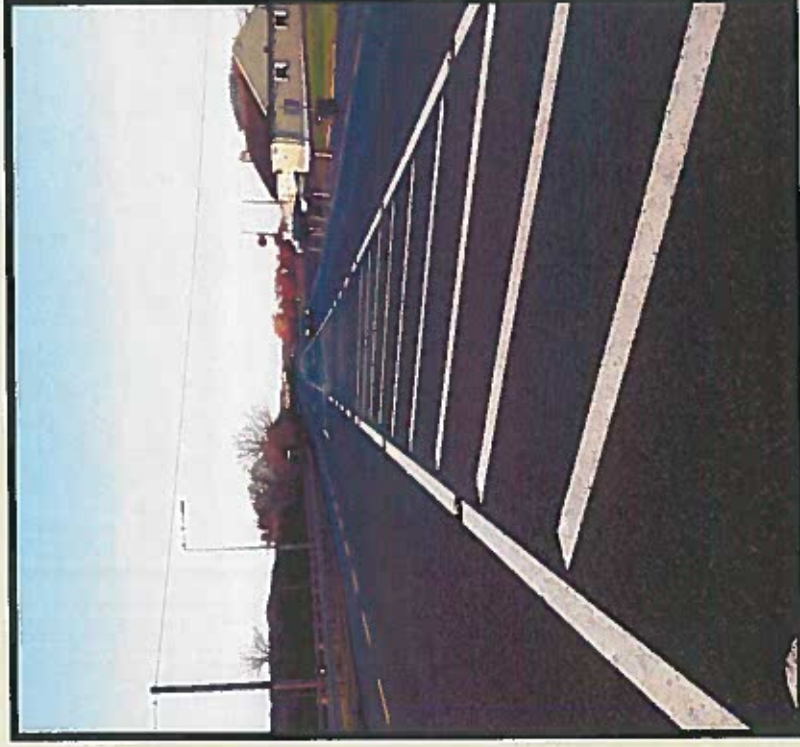


**AFTER - 2015**

# N24 National Primary Road –Improvements



**MOONCOIN 2015**



**GRANNY NOV 2017**

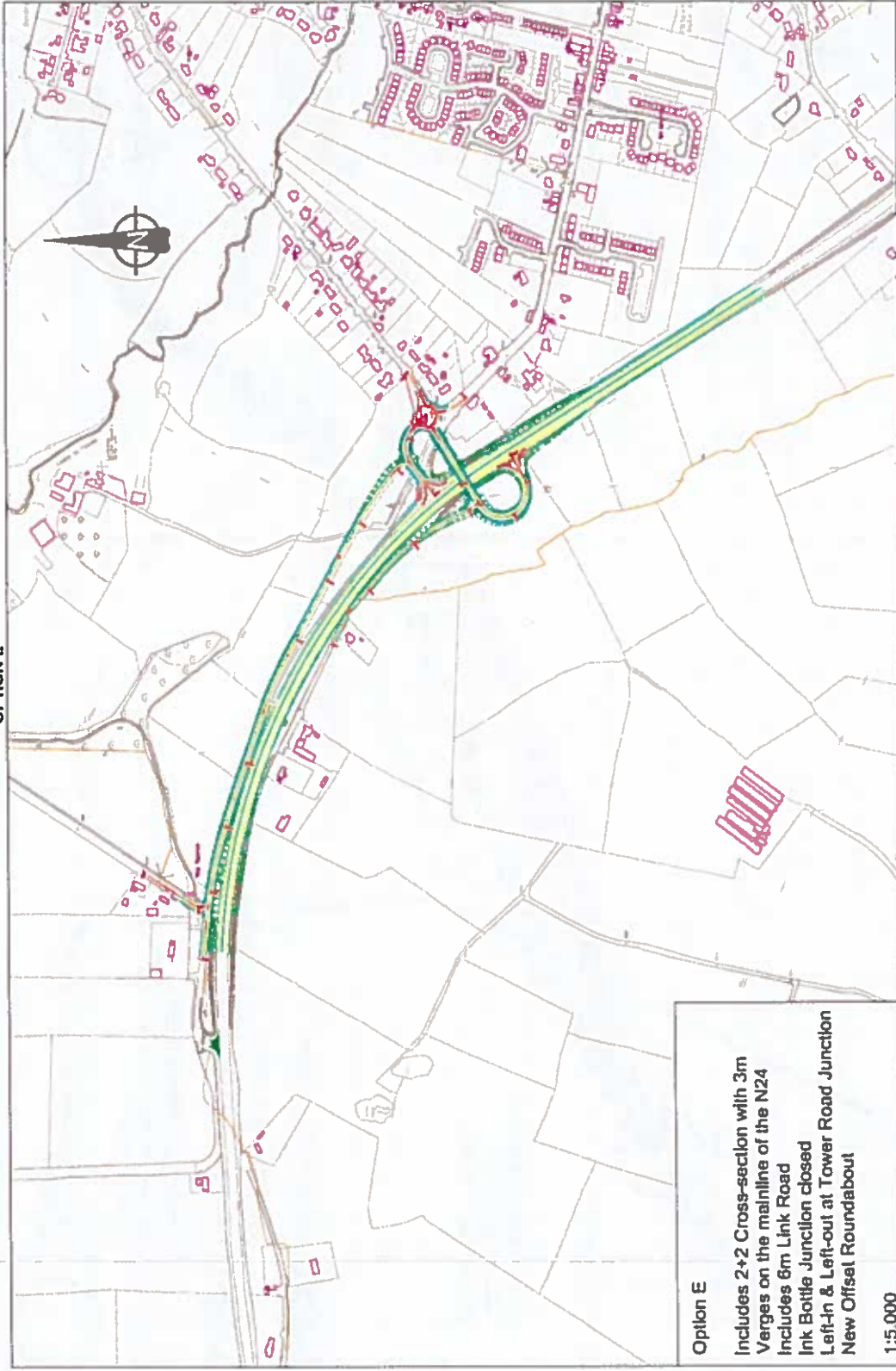


# N24 Tower Road Overbridge and Ink Bottle Junction

N24 Tower Road Junction Improvement Scheme

Road Safety Impact Assessment

OPTION E

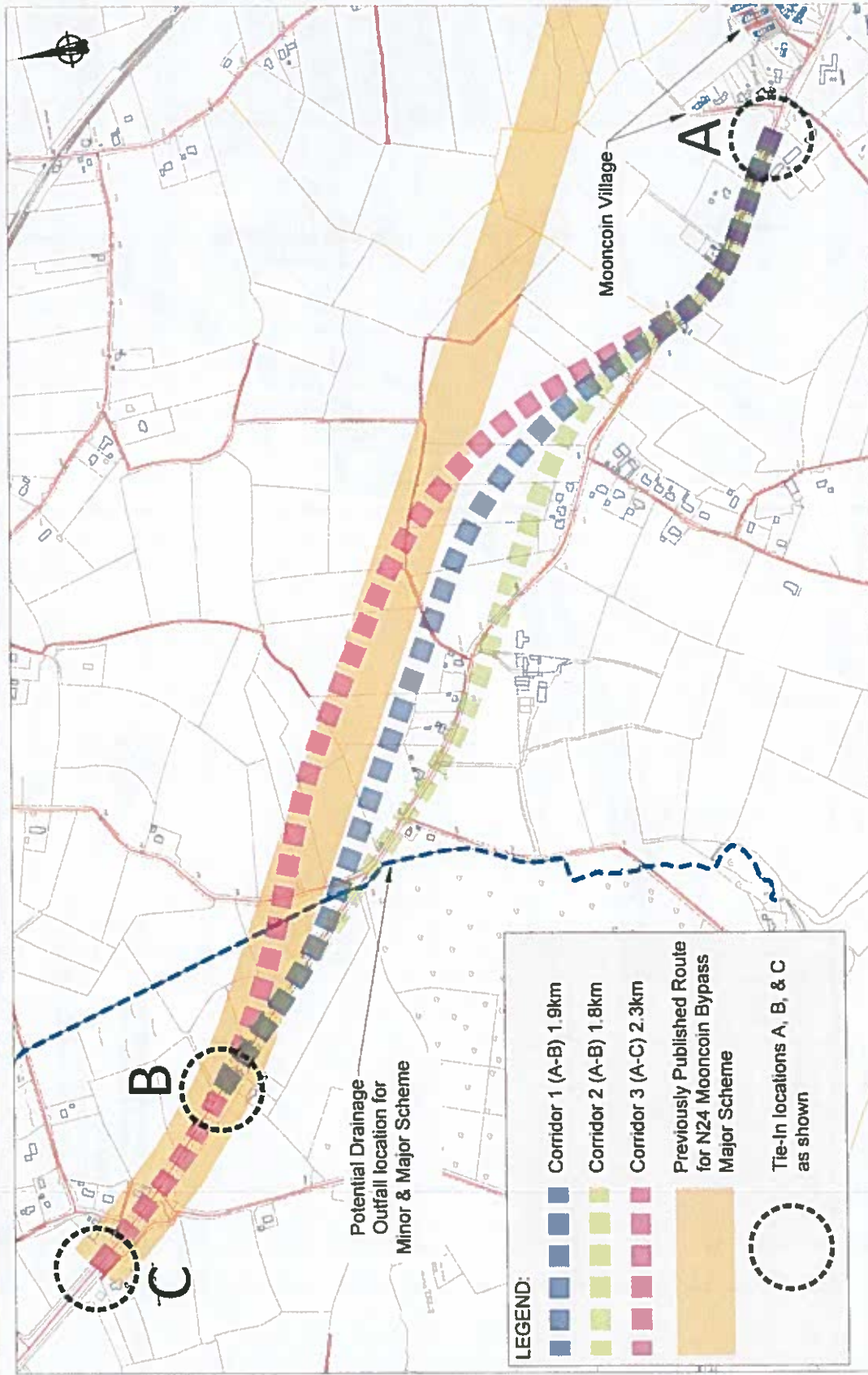


Option E

Includes 2+2 Cross-section with 3m  
Verges on the mainline of the N24  
Includes 6m Link Road  
Ink Bottle Junction closed  
Left-in & Left-out at Tower Road Junction  
New Off-set Roundabout

1:5,000

# N24 Carrick Road Improvement Scheme



**LEGEND:**

- Corridor 1 (A-B) 1.9km
- Corridor 2 (A-B) 1.8km
- Corridor 3 (A-C) 2.3km
- Previously Published Route for N24 Mooncoin Bypass Major Scheme
- Tie-In locations A, B, & C as shown

KILBRIDE COUNTY COUNCIL COUNTY HALL JOSEY STREET KILBRIDE		ROAD & TRAFFIC SURVEILLANCE CONSULTANTS 100 WINDMILL LANE WINDMILL LANE WINDMILL LANE		N24 Carrick Road Improvement Scheme T19/18/030 Indicative Route Corridor Options 9.2.1 F2	
Date: 1.08.2017 Scale: 1:1000 Project: Carrick Road Improvement Scheme		Date: 1.08.2017 Scale: 1:1000 Project: Carrick Road Improvement Scheme		Drawing Number: K1813403-F2-AS-020 Drawing Title: Indicative Route Corridor Options	

DO NOT SCALE

## N25 National Primary – New Ross Co. Bounds to Waterford Co. Bounds

- Since 2010 4.7 km's out of the 16 km's (or 29%) was improved under the Pavement Improvement & Minor Works Programme. This excludes the 6.1km's of the Waterford City Bypass in Kilkenny which was opened in 2009 and falls under a PPP Contract.
- Schemes included:
  - 2010 New Ross to Annagh's Bridge
  - 2011 Gaulstown to Rhu Glen
- Total Expenditure of approximately €1.5 million

### Planned 2018 (Subject final TII Approval)

- Graiguenakill (New Ross By Pass tie in) to Gaulstown
  - Luffany and Rhu Glenn
- Overall Length 4.22 km Preliminary Cost Estimate €2,000,000

On completion of the 2018 Schemes the N25 from the New Ross Bypass to the Waterford City By-pass, a total length of 8.75km, will have been resurfaced over the past 8 yrs at an estimated cost of over €3.5 million.

- New Ross Co. Bounds to New Ross By-Pass, 4.75km, Reclassified to Regional 2019 (An application will be submitted to TII for improvement works prior to reclassification)

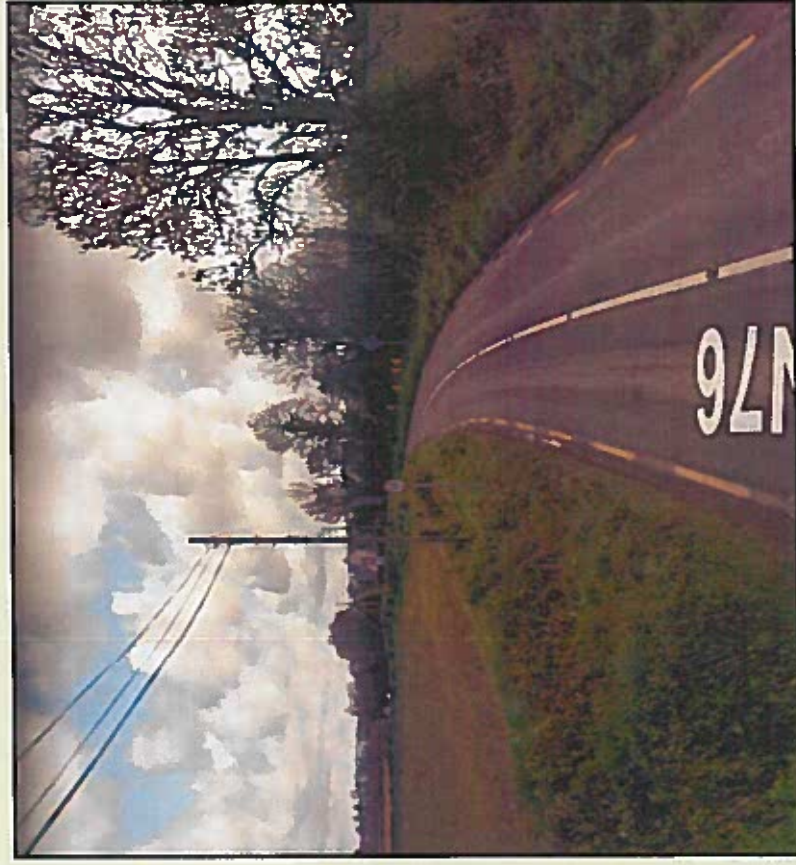
## N76 National Secondary-Kilkenny Ring Rd to Ninemilehouse Co. Tipperary

- Since 2006 14 km's out of the 23 km's (or 61%) was improved under the Pavement Improvement & Minor Works Programme
- 5 Separate PMI Schemes included:
  - 2016 & 2017 Callan Road Realignment Scheme
  - 2012 N76 Waterford Rd- Shellumsrath
  - 2010 Shellusrath to Brownstown
  - 2008 Farmlea to Ballybur
  - 2006 Ballymack
- Total Expenditure €11.5 million approx

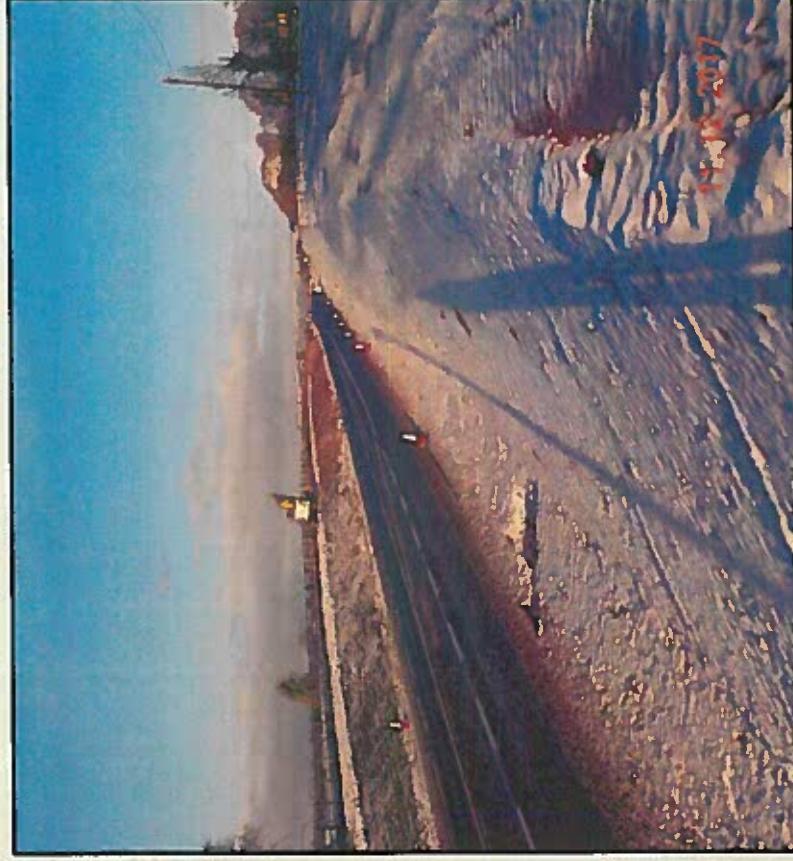
### Target - next number of years (Subject to TII Approval)

- Ballymack to Castletobin , length 3700m
- Callan Bypass, length 3300m
- Brownstown to Ballybur, length 1268m

# N76 Callan Road Realignment Scheme



DECEMBER 2016



DECEMBER 2017

## **N77 National Secondary – Kilkenny Ring Road to Laois Co. Bounds**

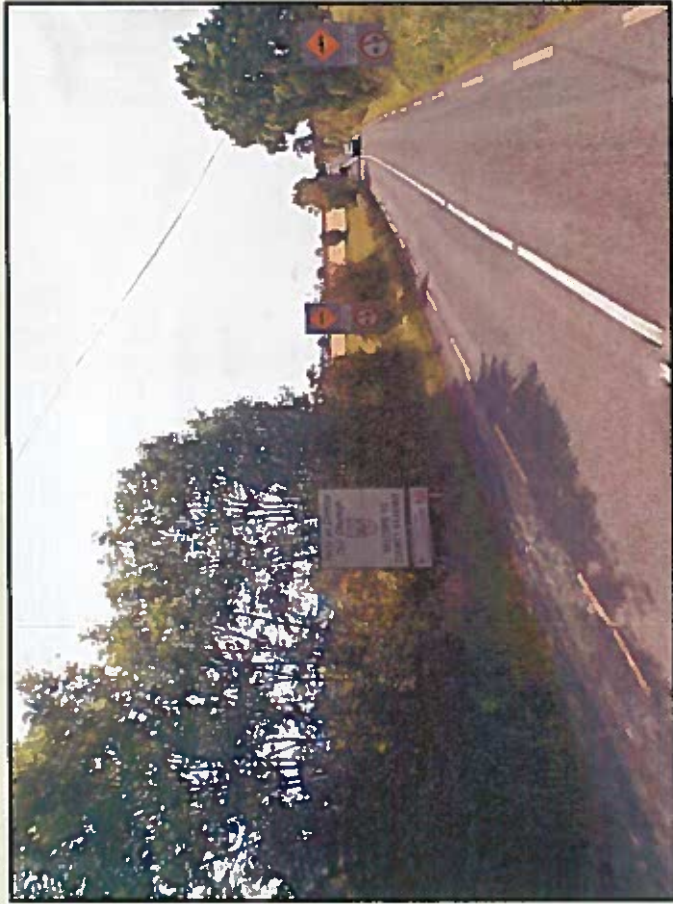
- Since 2006 14.5km's out of the 23.5 km's (or 62%) was improved under the Pavement Improvement & Minor Works Programme
- 8 Separate PMI Schemes:
  - 2016 Conahy Knockroe      2015 Ballynaslee
  - 2014 Ballyragget            2014 Hennebrys to Ardaloo
  - 2012 Hennebrys Cross      2012 Ring Rd To Hennebrys Cr.
  - 2007 Conahy Oldtown      2006 Ardaloo Swiftheath
- Total Expenditure €9.5 million approx

### **Planned – 2018**

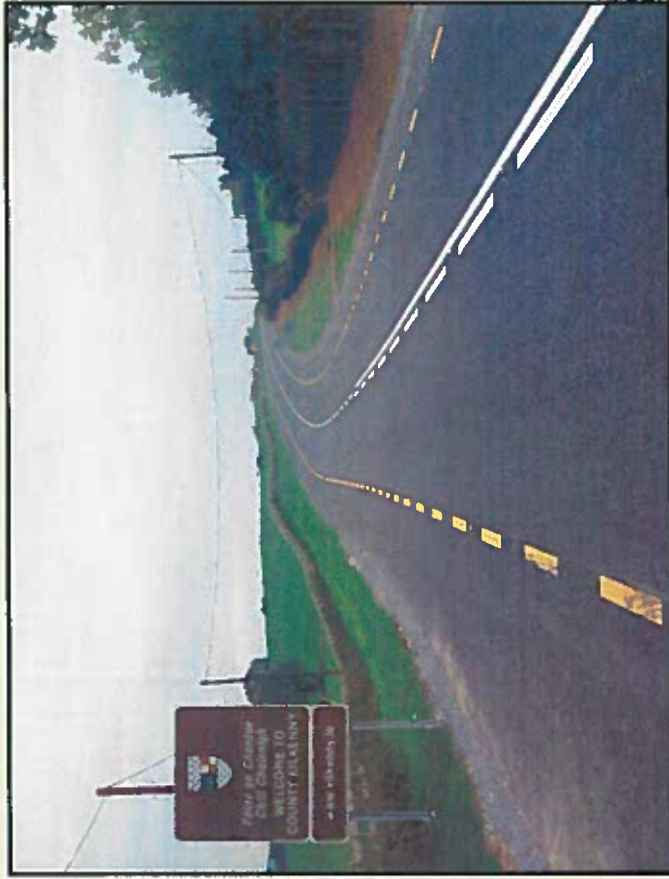
- **Ballyragget to Ballynaslee Minor Improvement Scheme- 2.5km (3.5km) Programme**
  - Complete Project Appraisal Process & Design Report
  - Obtain Planning under Part 8 & Preparation of CPO Drawings for Publication



# County Boundary - N77 Ballynaslee



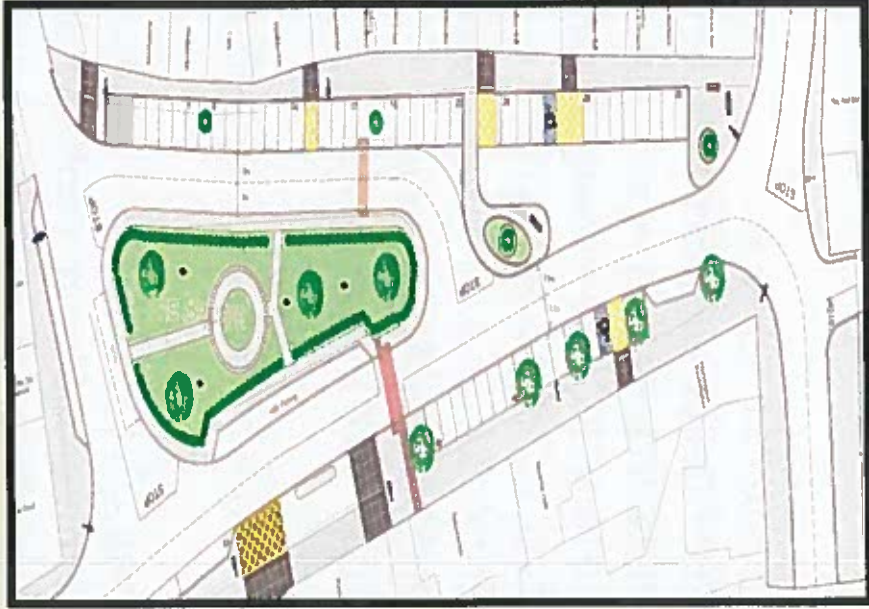
DECEMBER 2014



OCTOBER 2015



# N77 Ballyragget Village



**PART 8 2013**



**POST 2014**

# N78 National Secondary – Hennebry’s Cr. to

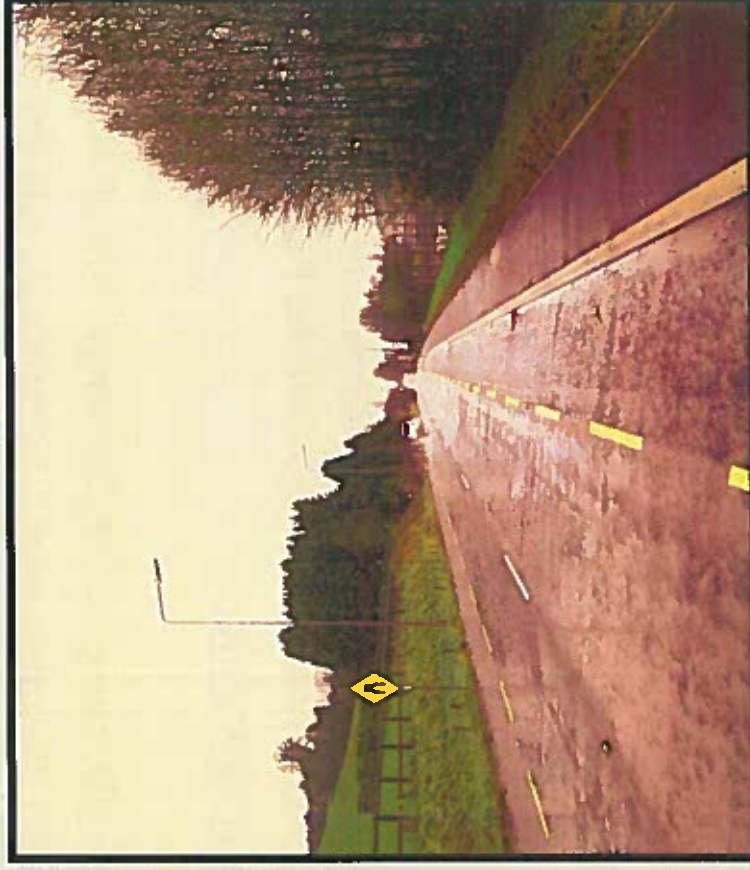
## Laois Co. Bounds

- Since 2006 13.5km’s out of the 20 km’s (or 67.5%) was resurfaced / strengthened under the Pavement Improvement & Minor Works Programme
- 7 Separate PMI Schemes:
  - 2017 Ballycomey to Castlecomer
  - 2016 N78 Hennebry’s Cross to Corbetstown
  - 2016 N78 Damerstown to Ballycomey
  - 2016 Castlecomer Square
  - 2011 Castlecomer Kilkenny Road
  - 2007 N78 Webbsborough
  - 2006 N78 Damerstown
- Expenditure      Excess of €3 million.
- Planned 2018 (Subject final TII Approval)
- **Castlecomer Bridge to Coolbaun South and Coolbaun North to Crettyard**
  - Overall Length 6.5 km’s - Preliminary Cost Estimate €2,000,000
- On completion of the 2018 Scheme the full N78 will have been improved over the past 12 yrs at an estimated cost of over €5 million.

# N78 National Secondary



Hennebry's Cr. 2012



Ballycomry 2017

## Summary

Since 2006, **67km's or 34%** of the National Road Network in the County, has been strengthened / resurfaced under the Pavement Improvement and Minor Works Programme, with a Capital Investment in excess of **€35 million**.

A further **84km's** of new National Road Network was constructed under the Major Works Programme during the same period, namely the M8 & M9 Motorways, Waterford City By-Pass and the Kilkenny Ring Road Extension.

The combined length of National Road Network in the County improved via the Pavement Improvement & Minor Works Programme or Major Works Programme is **150km's in length or 75% of the network**.

- A further 8no. Schemes are at application, planning or tender stage, which have a combined length of **24km's** and subject to Planning and TII approvals will be delivered over the next number of years.
- Our National Road Network is in a good place and has benefitted significantly through substantial Capital Investment over the last decade and we will continue to put a strong case forward to TII for Kilkenny to attract future funding.

Thank you for your time!

