

# 3.0 Vision





### 3.0 A Vision for Loughmacask

As a part of Kilkenny City, it is the Kilkenny County and Borough Councils' vision to see Loughmacask's distinct landscape be developed as a sustainable collection of neighbourhoods, set around a green corridor and a village core, providing residents with a great place to live and a strong sense of community.

#### A Part of Kilkenny

Located on the edge of Kilkenny City, Loughmacask will have strong physical and cultural linkages to the city centre and to the surrounding countryside, including the Nore and Breagh River Valleys. Loughmacask will be connected to the city centre by a network of pedestrian and cycle ways, improved transport corridors and visually connected with views of landmarks such as St. Mary's and St. Canice's Cathedrals. The Loughmacask lake will be set into a parkland area and will be accessible along a pedestrianised Lousybush lane. The Loughmacask LAP is also being utilized as an opportunity to open connections to the Breagh River Valley.

#### A Distinct Landscape

The vision for Loughmacask is responsive to the distinct landscape of the area, creating an environment that locals and visitors will be able to relate to and identify with. The integration of existing landscape features such as the rolling landform, Lousybush Lane and hedgerows to the west and south-west of Lough Macask will assist in providing a structure for future development that commemorates historic land-uses.

Particular outstanding features, such as Lough Macask and a variety of archaeological and architectural heritage features unique to the Loughmacask area will be integrated where appropriate and their accessibility enhanced for enjoyment of the local residents and visitors to the area.

#### A Great Place to Live

Enabling people to move freely within and around their community, while undertaking their day to day activities, is integral to building a community that responds to the basic needs and desires of its people. The provision of excellent infrastructure at all levels – sports and recreation grounds, open space, pedestrian and cycle routes, safe roads, enhanced education facilities, and quality childcare – will assist Loughmacask in becoming a great place to live.

#### A Strong Community

The Loughmacask LAP will establish a well-balanced community, integrating and accommodating a diverse array of social and cultural backgrounds. Loughmacask will open up further choice for living in Kilkenny and, within itself, will offer a range of living options for young people, families and the elderly.

A defined village centre arranged around a public square offering local shops and services, will provide a strong sense of place and identity for the local community. Sports and recreation grounds, along with other community facilities will also facilitate opportunities for community groups to establish and grow. Employment opportunities will continue to be provided locally through existing industry and new business opportunities in and around the village centre.



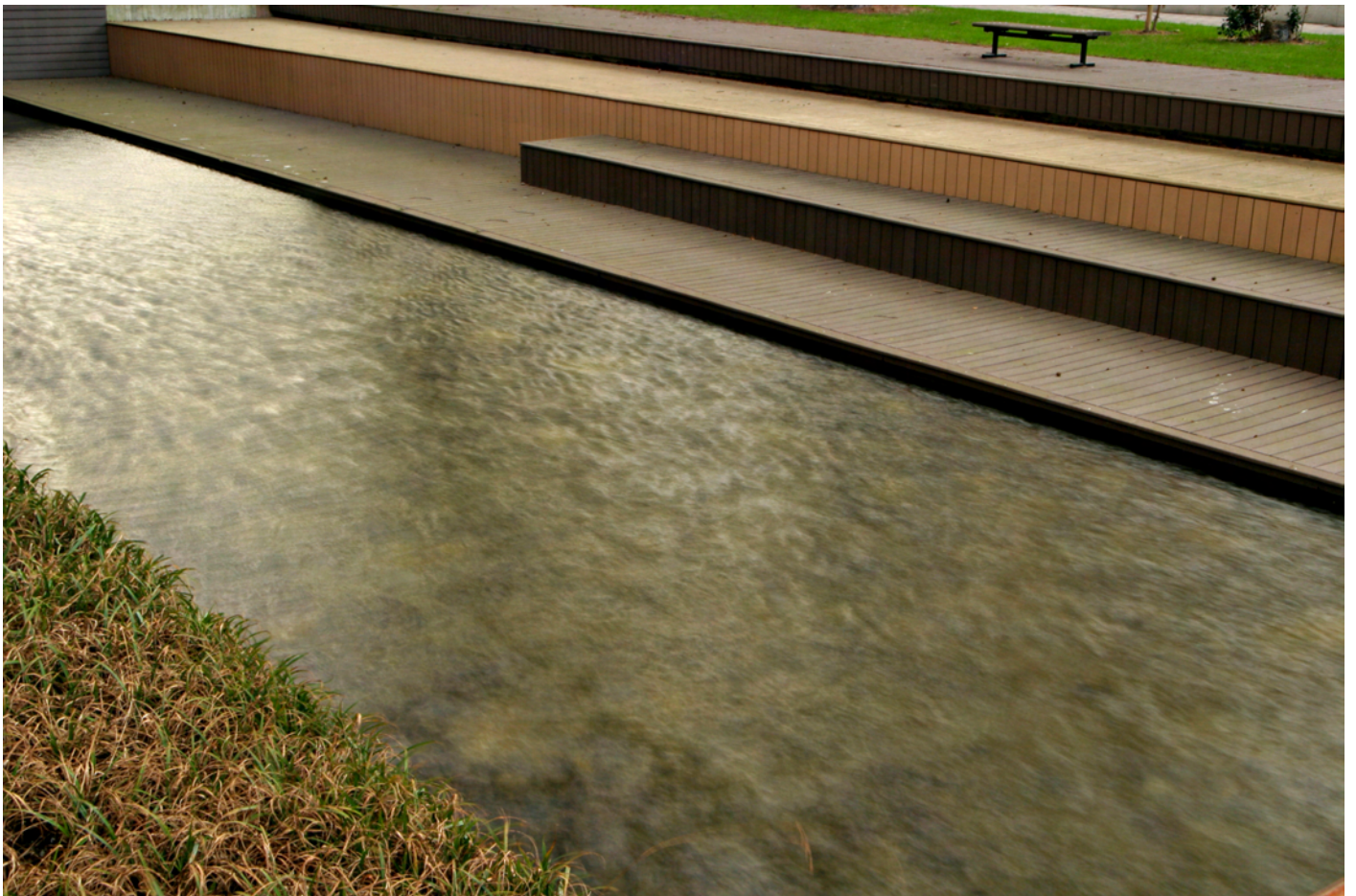
## A Sustainable Environment

The Loughmacask LAP envisages a sustainable environment developed with the assistance of design guidelines relating to such matters as open space, building design, local infrastructure (including roads, pedestrian and cycle ways, and the management of drainage patterns and flooding), and waste minimisation and recycling.

In particular, design guidance will seek to ensure that key public amenities, such as recreation grounds and childcare, are located within close proximity to key nodes (such as the village centre), with pedestrian and cycle routes linking them to adjoining neighbourhoods; energy efficient design and energy saving building technology will be promoted as an integral aspect of all future development; and particular attention will be given to implementing sustainable methods of water runoff management to protect the quality of natural water systems and habitats in the area.

With regard to movement, the LAP promotes interconnectivity between all modes of transport – vehicular, pedestrian, cycle and public transport – and seeks to assist in improving the efficiency and performance of connections between the LAP area and Kilkenny city.

The principles of waste minimisation and recycling will be key considerations in the design and construction of new developments.



Attenuation Pond

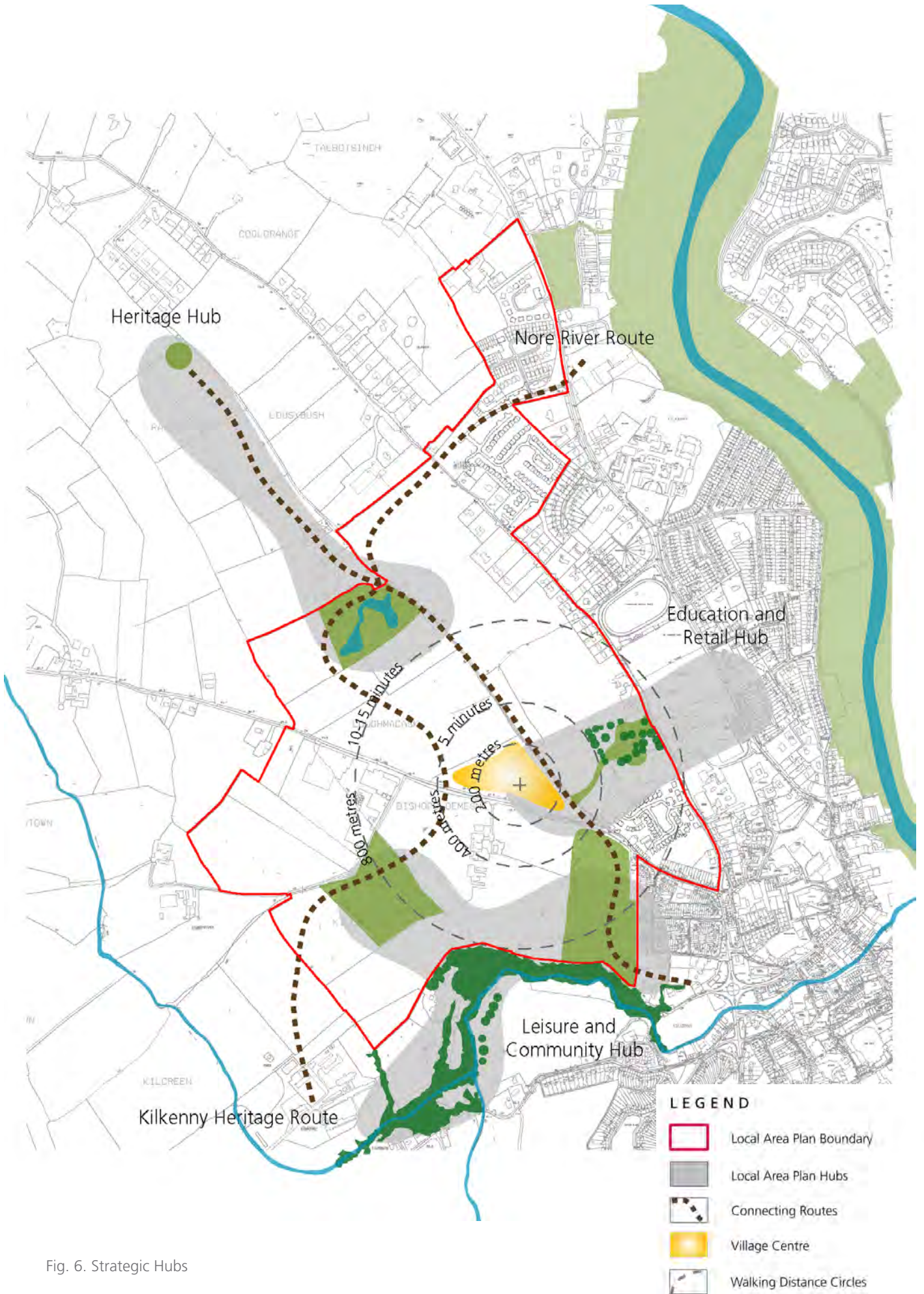


Fig. 6. Strategic Hubs

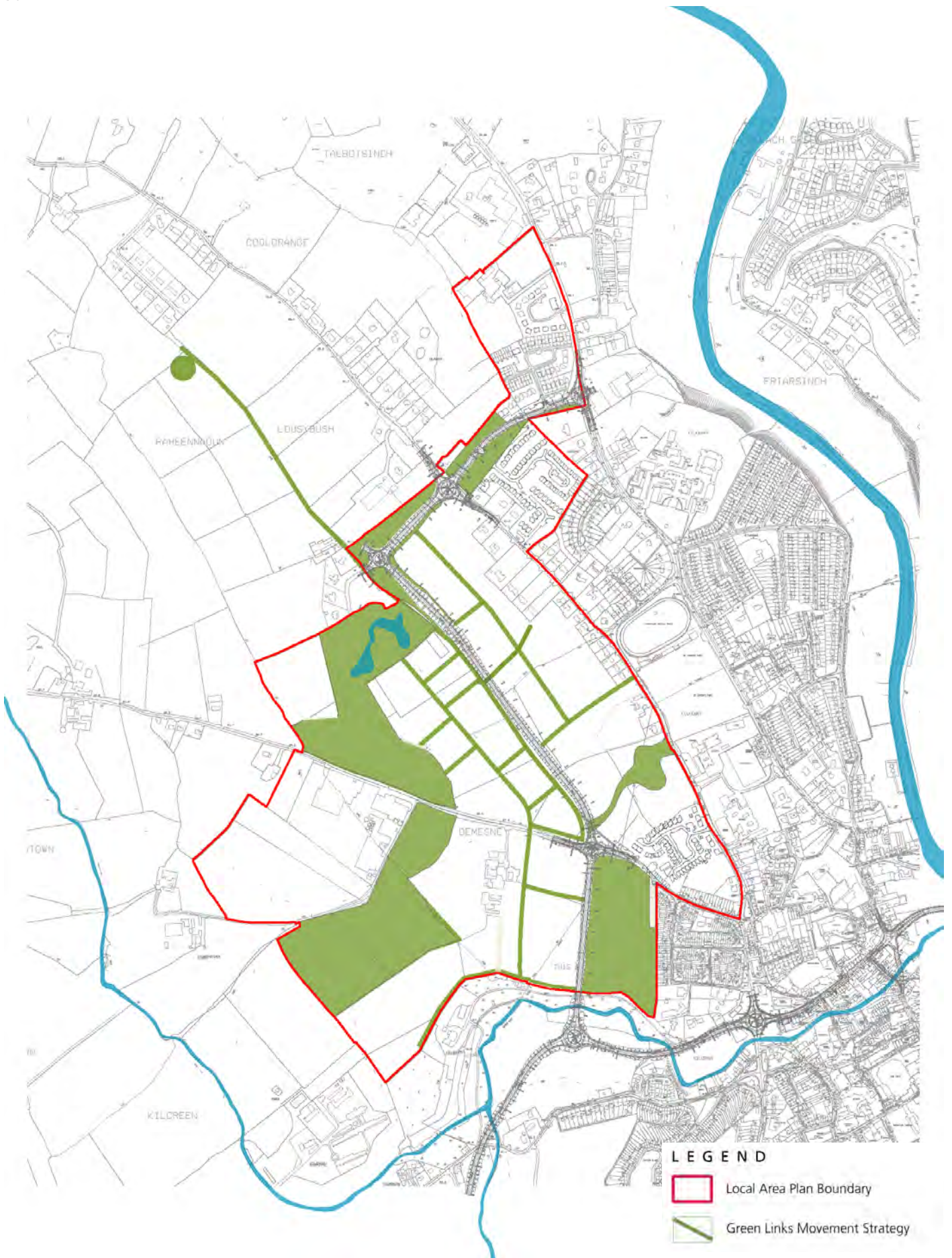


Fig. 7. Strategic Green Links

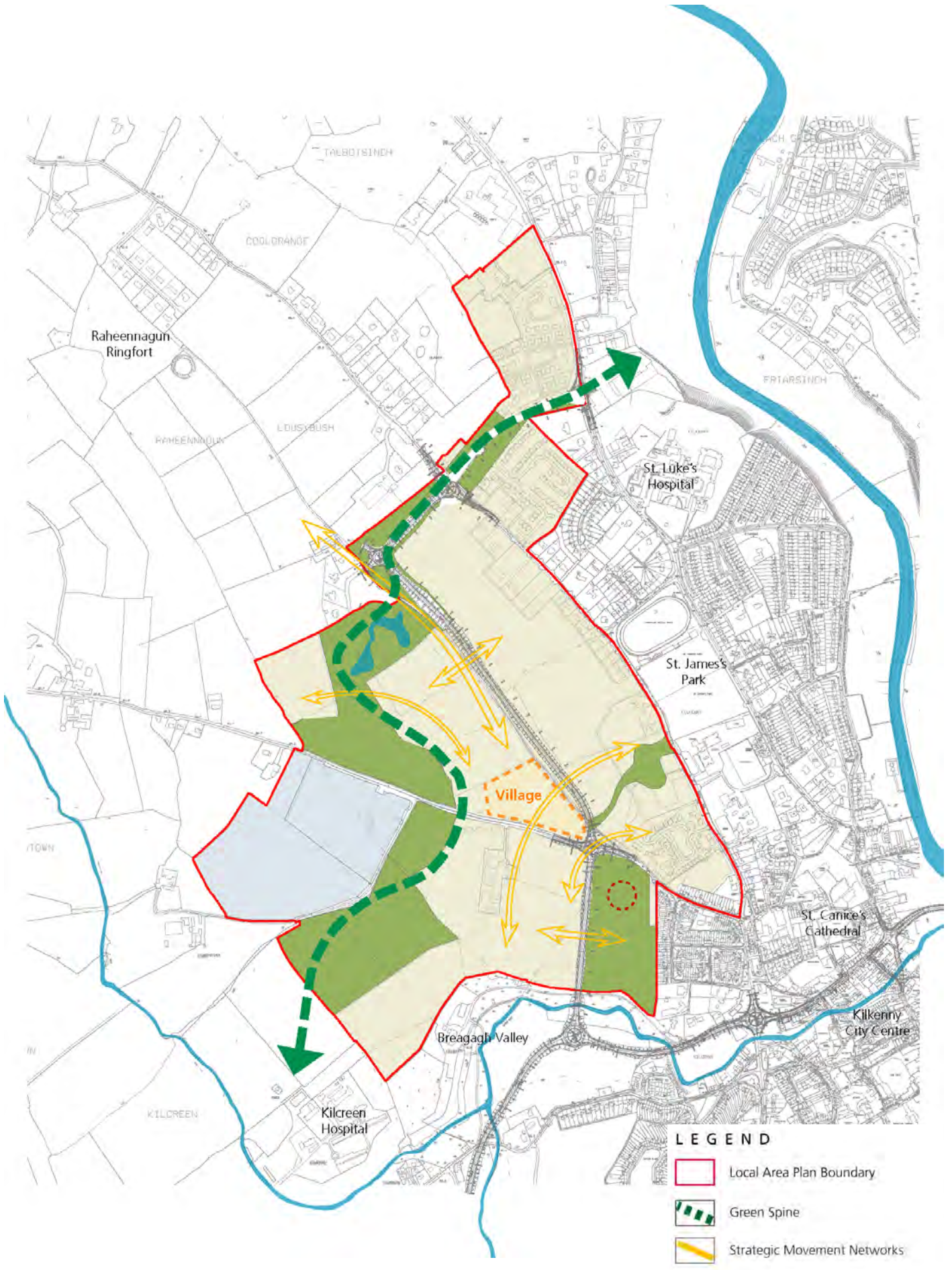


Fig. 8. Strategic Movement Corridors

